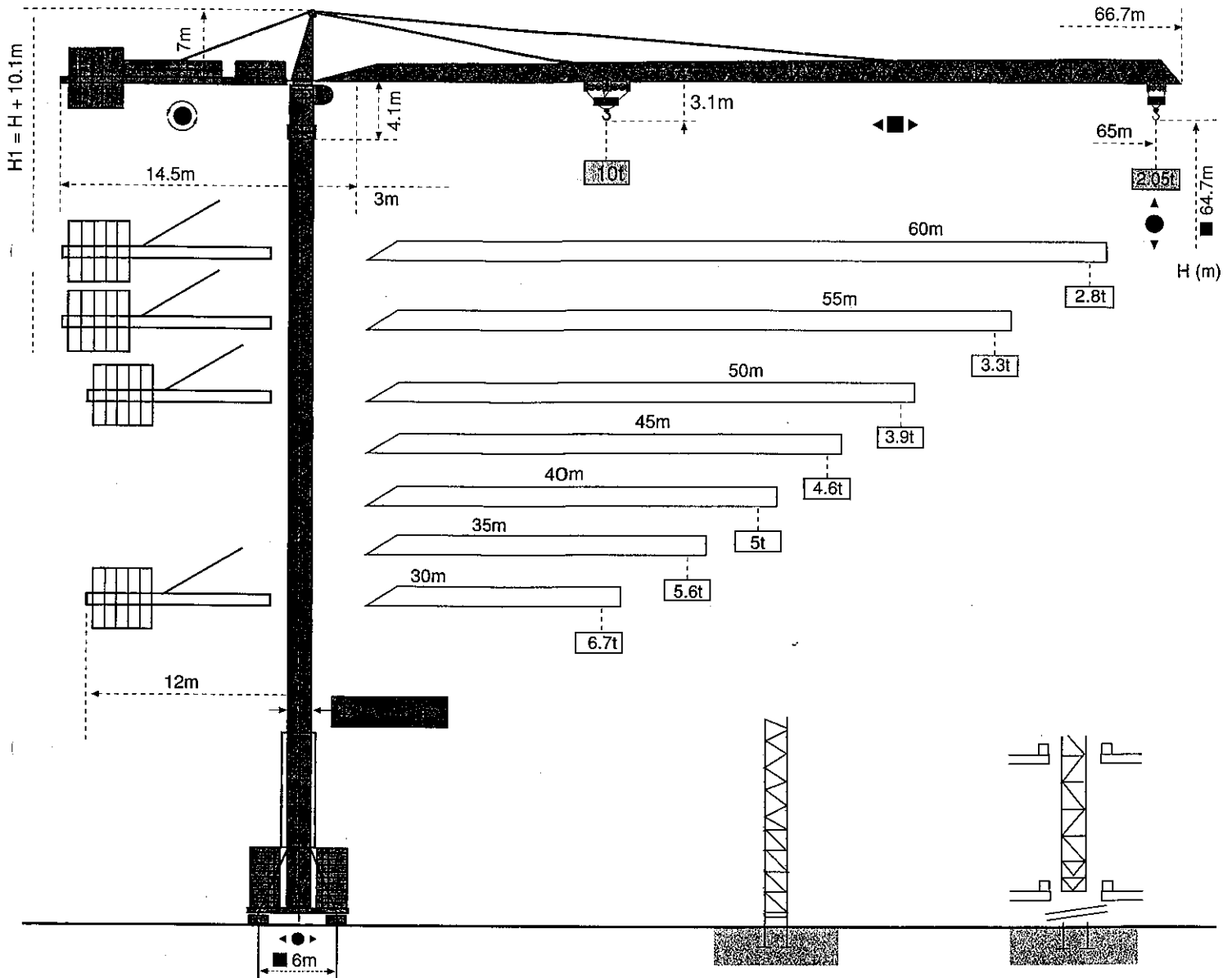
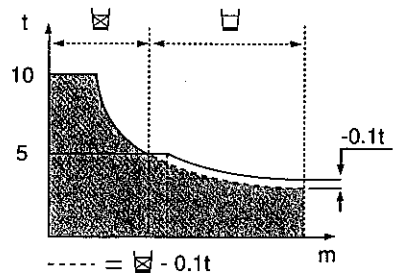
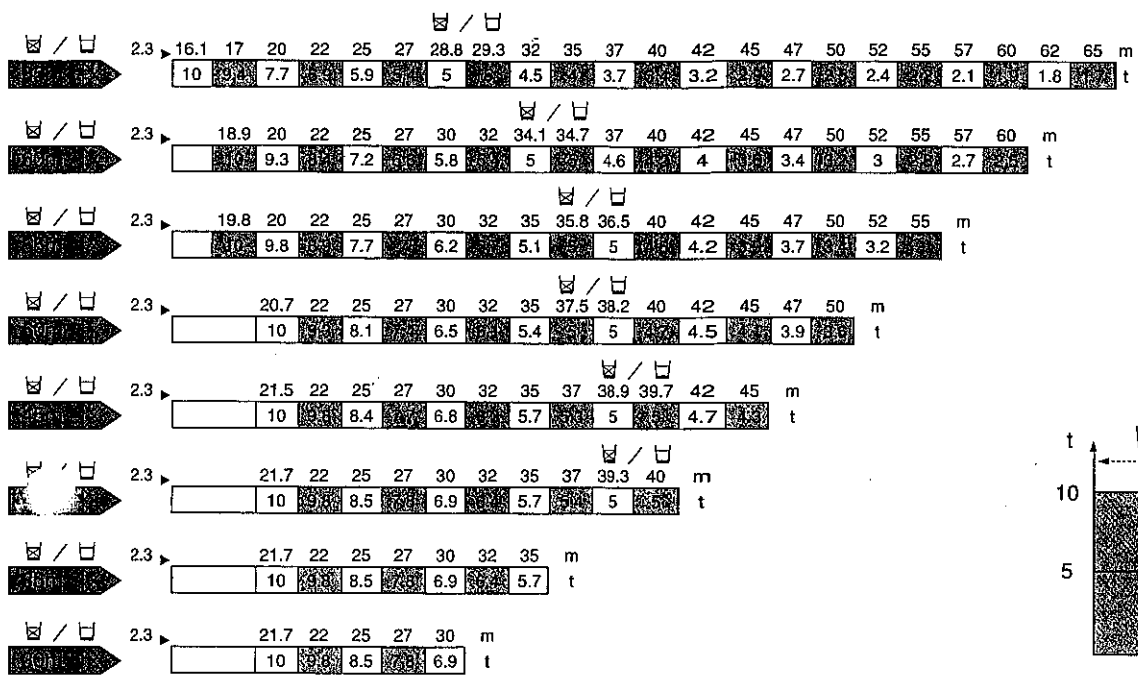
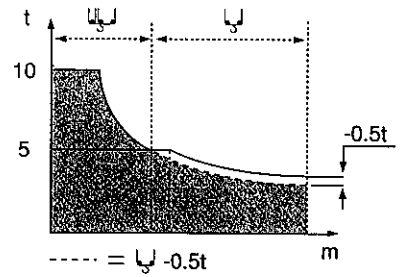
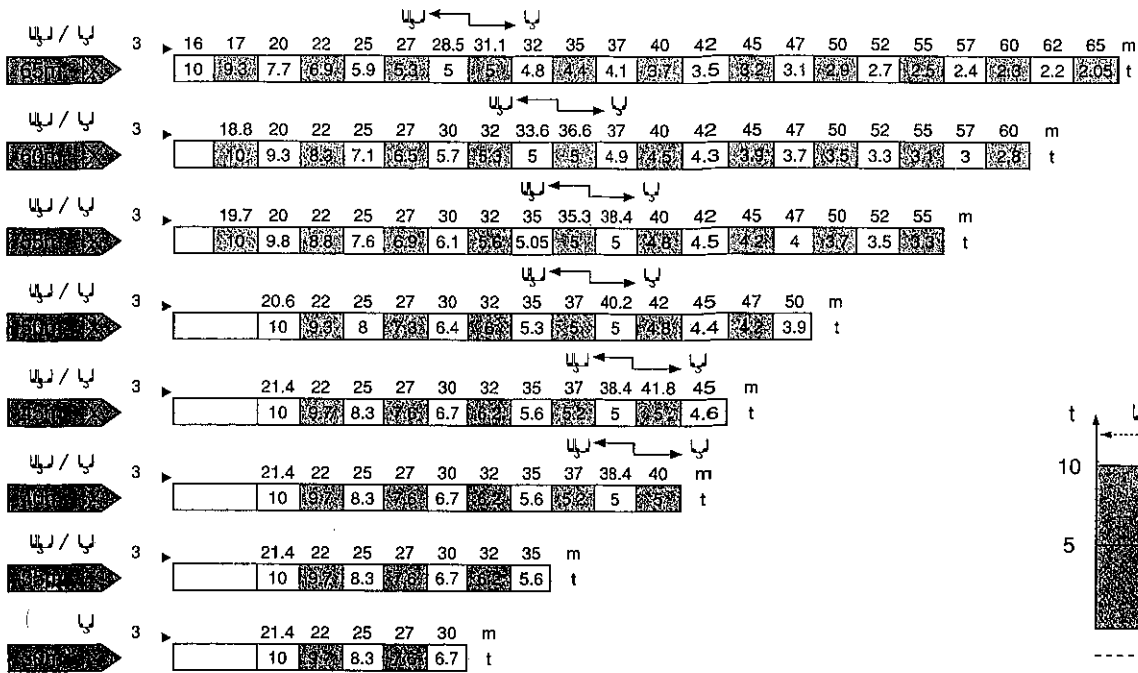


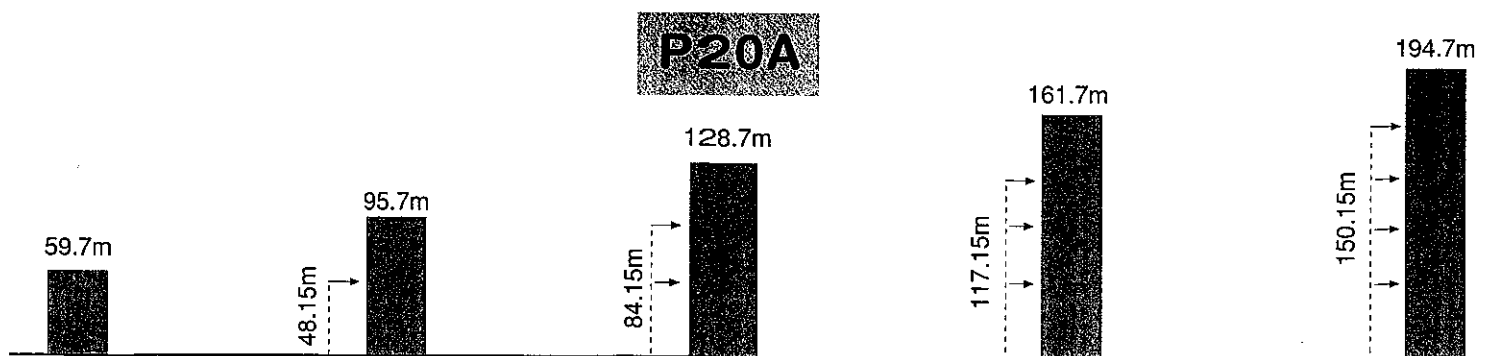
MC 235B



Load diagrams



Anchorage



Masts / Reactions

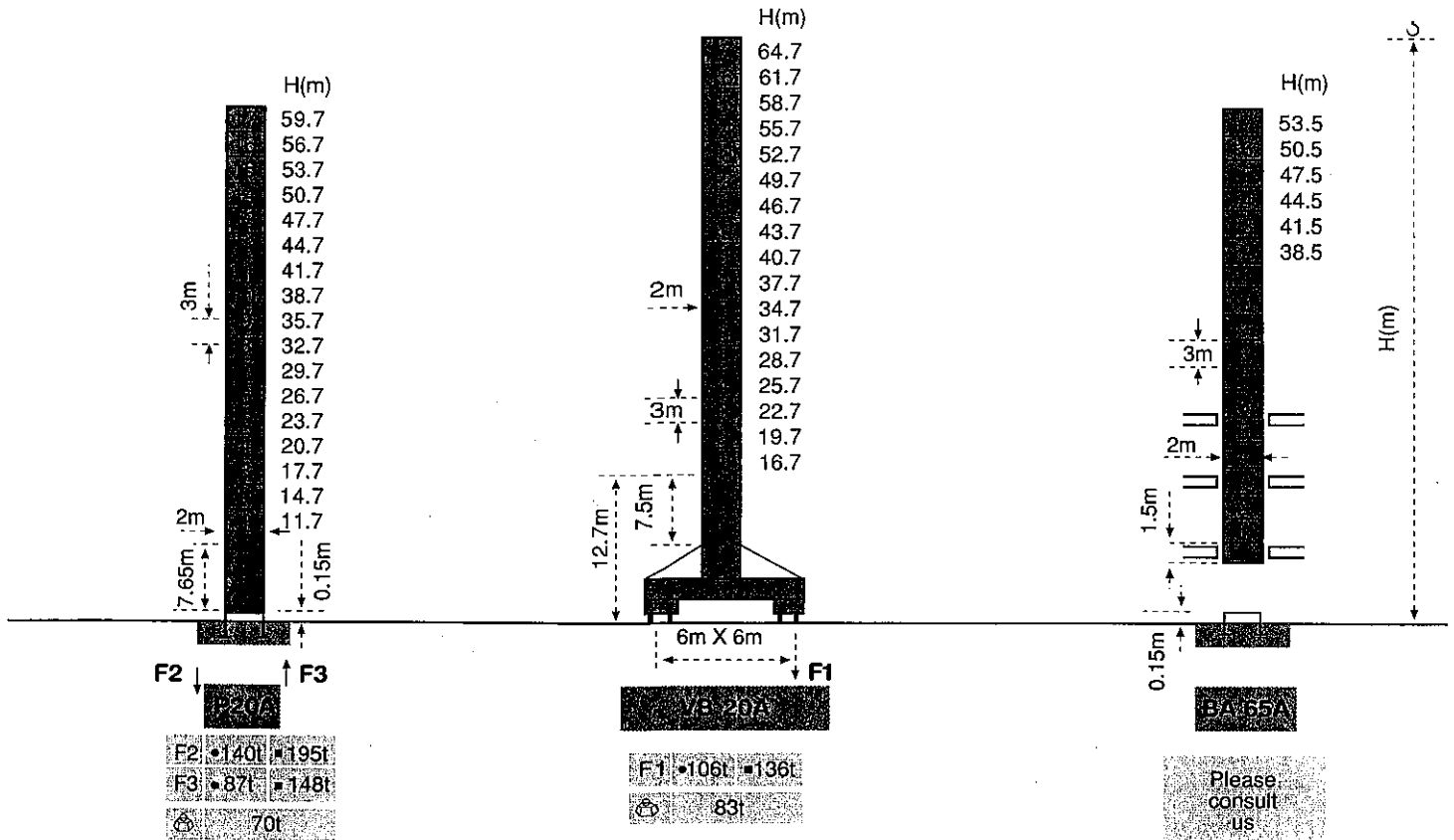
Masts

3m

2m

Jib

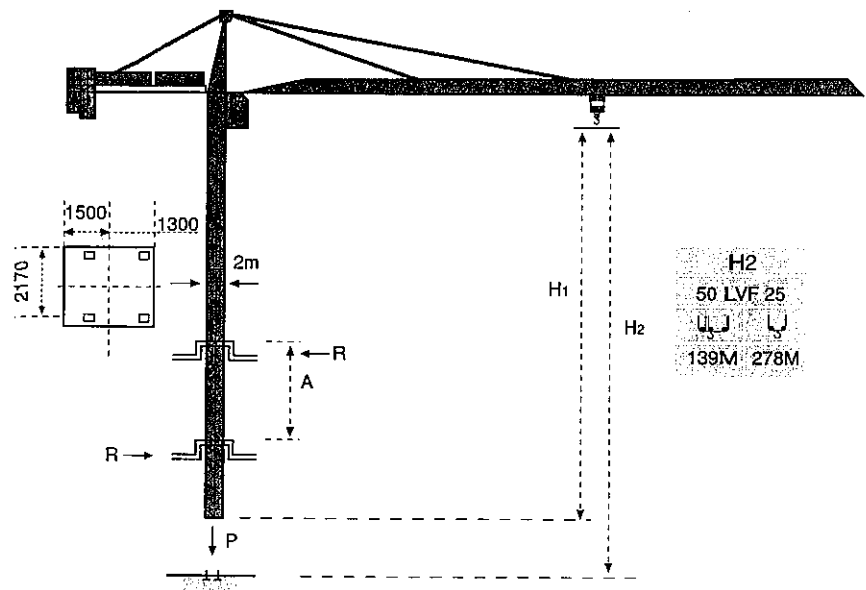
30m — 65m



F = Reactions

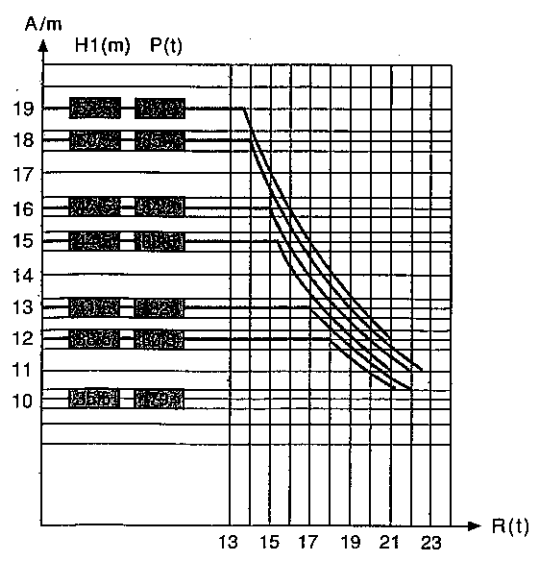
- In service
- Out of service
- ⊗ Without load and ballast with longest jib and maximum height

Climbing crane




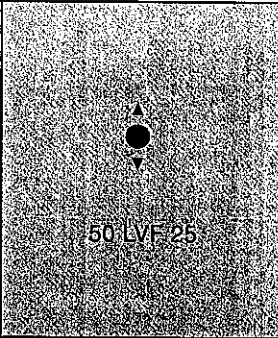
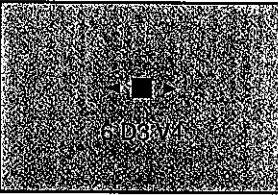
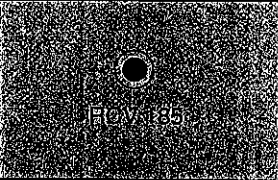
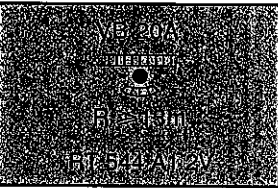

H2
50 LVF 25
139M 278M

BA 65 A



A Distance between collars
P Crane weight (in service)
H1 Crane height
R Horizontal reaction

Mechanisms

| | | m/min | t | m/min | t | ch-Ps hp | kW |  |
|--|---|-------------------------|------|---------------|------|-------------|---------|---|
| Hoisting |  | ↓ ↑ | | ↓ ↑ | | 50 | 37 | 557m |
| | | 4 | 5 | 2 | 10 | | | |
| | | ↓ | 5 | ↓ | 10 | | | |
| | | 10 | 5 | ↓ | 10 | | | |
| | | ↓ | 5 | ↓ | 10 | | | |
| | | 32.6 | 5 | ↓ | 16.3 | | | |
| | | ↓ | 3.75 | ↓ | 22 | | | |
| | | 44 | 3.75 | ↓ | 7.5 | | | |
| ↓ | 2.5 | ↓ | 5 | | | | | |
| 65 | 2.5 | ↓ | 32.5 | | | | | |
| ↓ | 1.25 | ↓ | 2.5 | | | | | |
| 79 | 1.25 | ↓ | 39.5 | | | | | |
| Trolleying |  | 10 - 50 m/min (10t) | | | | 6 | 4.4 | |
| | | 100 m/min (5t) | | | | | | |
| Slewing |  | 0 ⇒ 0.8 tr/min (rpm) | | | | 2 x 9 | 2 x 6.6 | |
| Travelling |  | 13.5 - 27 | | | | 4 x 7 | 4 x 5.2 | |
| CEI 38  | IEC 38 | kVA | | Generator set | | | | |
| 400V (+6% - 10%) 50Hz | | 50 LVF : 75 kVA | | | | * | | |

* Please consult us.

Subject to Modification. This commercial document is not legally binding. For any technical information, please refer to the corresponding instructions.



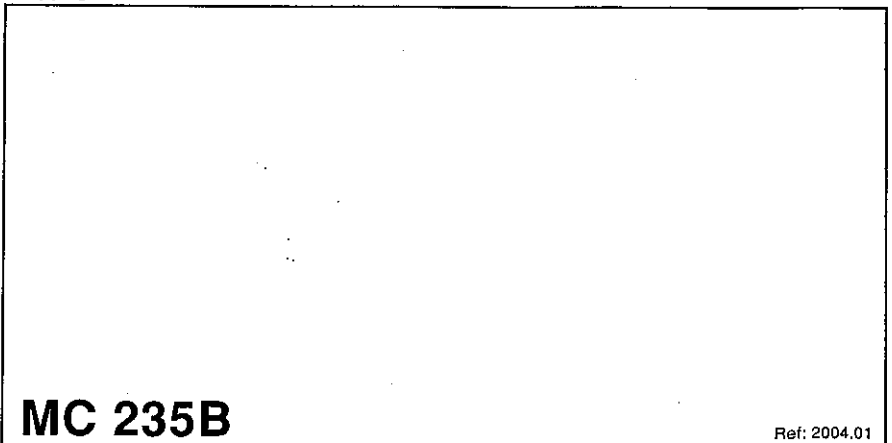
GROVE.

POTAIN 

Manitowoc Crane Group Asia Pte Ltd
Manitowoc Crane Group

26 Benoi Road
Singapore 629 898
Tel: 65-6861 7133
Fax (Admin/Sales) : 65-6862 4040
Fax (Service/Parts): 65-6862 4142
www.manitowoccrane.com

Copyright. © POTAIN 2004



MC 235B

Ref: 2004.01