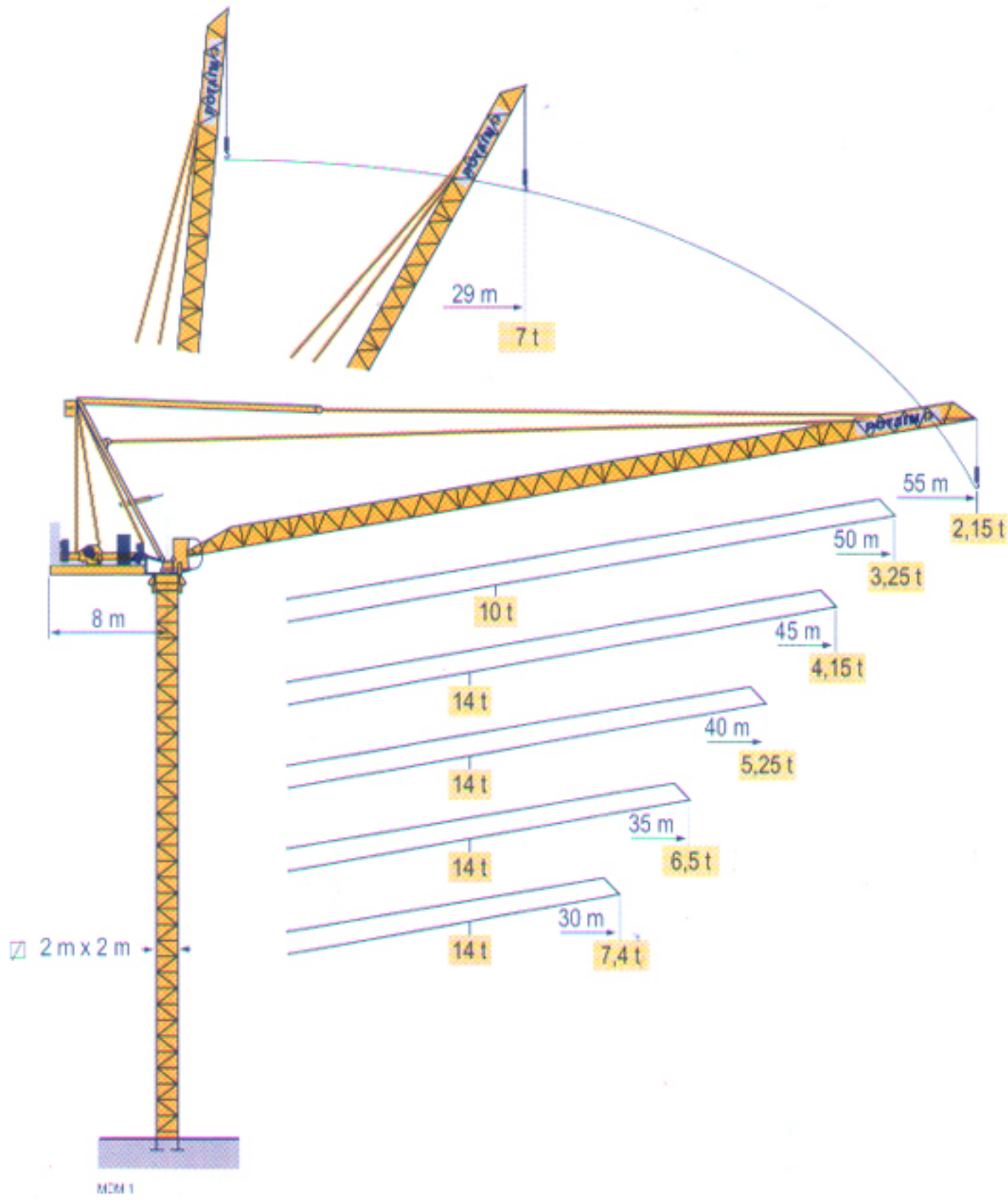


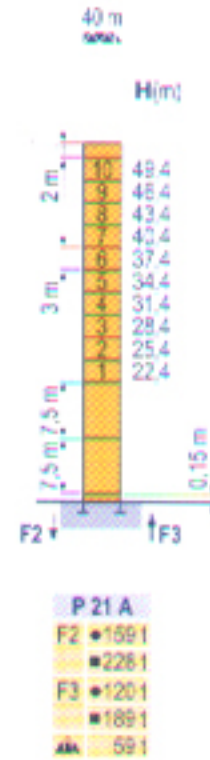
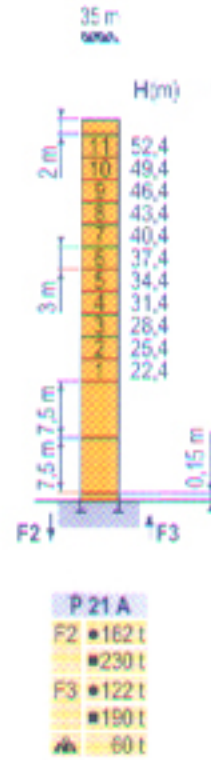
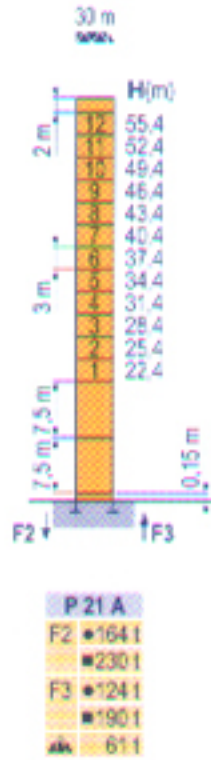
MCR 225 A



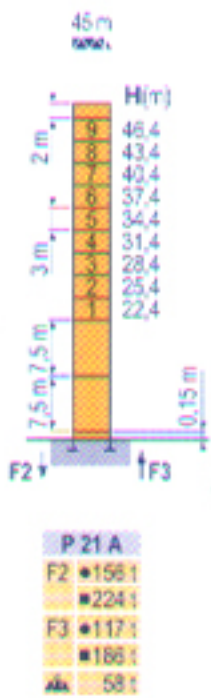
Masts / Reactions

V21

Telescopic 2 m



Telescopic 2 m



MCR 225 A

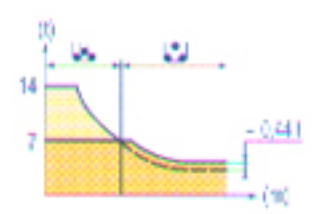
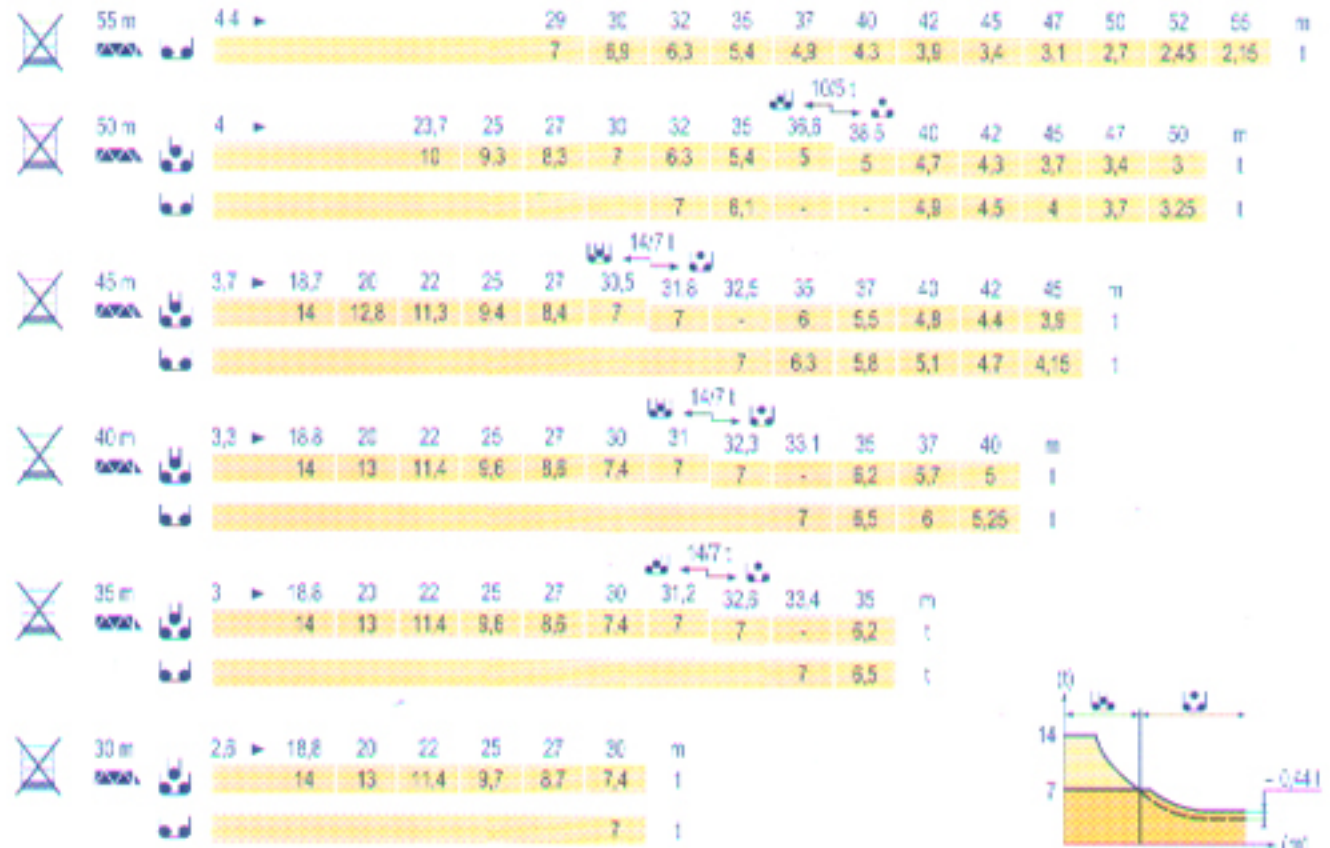


GB

- Reactions in service
- Reactions out of service
- ▲ Without load, ballast (or transport axes), with maximum jib and maximum height.

Load diagrams

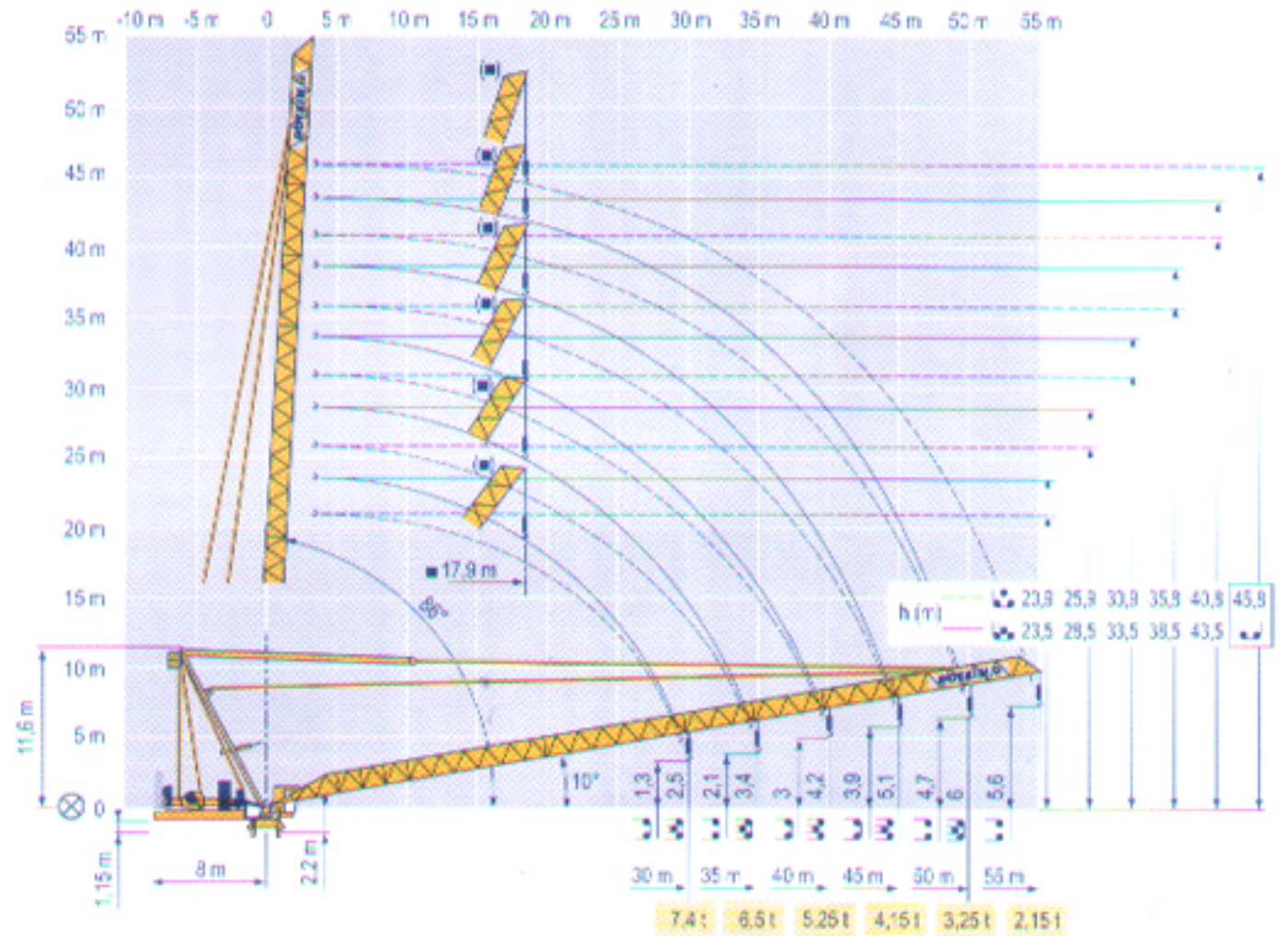
120-1



= - 0.1t

Luffing jib

120-1



MCR 225 A



- GB** Load diagrams without jib-end inspection platform
- Load diagrams with jib-end inspection platform deduct 0,1 t
- Jib hinge shaft
- Weathervaning position

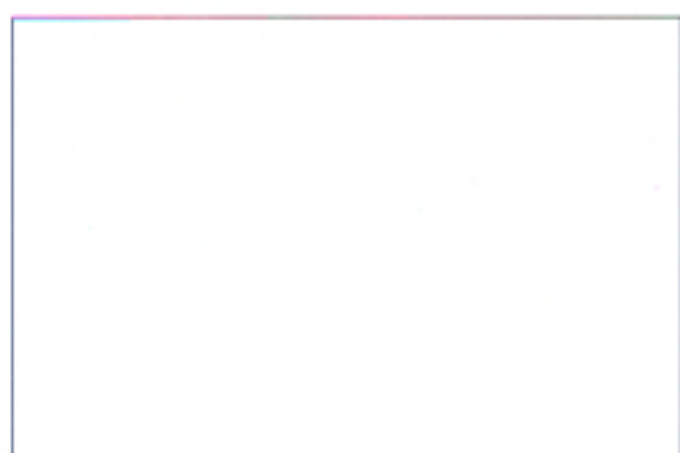
Mechanisms

MCR 225 A - 50 Hz													hp	kW													
	75 LVF 35	m/min	0	→	40	→	46	→	81	→	96	0	→	20	→	23	→	41	→	48	75	55	766 m				
	Optima	t	7		6	3	2,25		14		12	6	4,5														
	100 LVF 35	m/min	0	→	52	→	62	→	108	→	140	0	→	26	→	31	→	54	→	70	100	75	1146 m				
	Optima	t	7		6	3	1,75		14		12	6	3,5														
	150 LCC 35	m/min	0	→	84	→	100	→	124	→	166	→	200	0	→	42	→	50	→	62	→	83	→	100	150	110	1004 m
		t	7		5,25	3,5	1,75	0,875		14		10,5	7	3,5	1,75												
	100 V VF 40	m/min	2 min											100	75												
	RVF 162 Optima +	rpm	0 → 0,7											2 x 7,5	2 x 5,5												
CEI 38			IEC 38											kVA													
400 V (+6% -10%)														75 LVF : 185 kVA 100 LVF : 190 kVA 150 LCC : 240 kVA													

MCR 225 A - 60 Hz													hp	kW													
	75 LVF 35	m/min	0	→	40	→	46	→	81	→	96	0	→	20	→	23	→	41	→	48	75	55	766 m				
	Optima	t	7		6	3	2,25		14		12	6	4,5														
	100 LVF 35	m/min	0	→	52	→	62	→	108	→	140	0	→	26	→	31	→	54	→	70	100	75	1146 m				
	Optima	t	7		6	3	1,75		14		12	6	3,5														
	150 LCC 35	m/min	0	→	84	→	100	→	124	→	166	→	200	0	→	42	→	50	→	62	→	83	→	100	150	110	1004 m
		t	7		5,25	3,5	1,75	0,875		14		10,5	7	3,5	1,75												
	100 V VF 40	m/min	2 min											100	75												
	RVF 162 Optima +	rpm	0 → 0,7											2 x 7,5	2 x 5,5												
CEI 38			IEC 38											kVA													
480 V (+6% -10%)														75 LVF : 165 kVA 100 LVF : 190 kVA 150 LCC : 270 kVA													

- GB**
- Hoisting
 - Luffing
 - Slewing

This commercial document is not legally binding. For any technical information, please refer to the corresponding instructions.



Americas
Tel : +1 888 479 7278
Tel : +1 717 593 2900

Manitowoc Crane Group Asia Pte Ltd
Manitowoc Crane Group
4 Kwong Min Road
Singapore 628707
Tel: +65 6264 1188
Fax: +65 6862 4040
www.manitowoccrane.com

Europe - Middle East - Africa
Tel : +33 (0) 4 72 61 50 00
Tel : +44 (0) 191 522 2000

Asia - Pacific
Tel : +65 6264 1188
Fax : +65 6862 4142

www.manitowoccrane.com

MCR 225 A
R# 2005 06 VDM 1

Copyright/Reproduction interdite © POTAIN 2006